



Make a DIFFERENCE.

**LIFT UP YOUR COMMUNITY**

**GIVE. ADVOCATE. VOLUNTEER.**

2017-2018 Annual Report



# UNITED WAY OF CROW WING AND SOUTHERN CASS COUNTIES

## JULY 1, 2017 – JUNE 30, 2018

### IN-HOUSE AND COLLABORATIVE PROGRAMS 2018-2020 FUNDED PROGRAMS

#### INCOME PROMOTING FINANCIAL STABILITY AND INDEPENDENCE

- Operation Sandwich, United Way of Crow Wing and Southern Cass Counties
- Resources Connection Program, Bridges of Hope
- Path to Home, New Pathways
- Salem WEST, Salem Lutheran Church
- Journey Transitional, Lutheran Social Services
- Community Care N Share Café-Emily

#### EDUCATION HELPING PEOPLE ACHIEVE THEIR POTENTIAL THROUGH EDUCATION

- Imagination Library, United Way of Crow Wing and Southern Cass Counties
- Reach Out and Read, Brainerd Lakes Area Collaborative
- The Book Wagon, United Way of Crow Wing and Southern Cass Counties
- The Warehouse After School Program, Riverview Church-Pine River
- Youth Center After School Program, Cuyuna Range Youth Center
- Intellectual Disabilities Education, WeARE (Advocates for Reproductive Education)
- Community Based Mentoring, Kinship Partners
- People First, Disability Second, Confidence Learning Center

#### HEALTH WORKING TO ENSURE EVERYONE HAS ACCESS TO AFFORDABLE AND QUALITY CARE

- Women's Center, Mid-Minnesota Women's Center
- Alex and Brandon Child Safety Center, Mid-Minnesota Women's Center
- Self-Healing Community Project, Bridges of Hope
- Community Advocacy, Family Safety Network-Walker
- LifeTalks @ The Shop, Brainerd-Baxter Youth Center
- Community Outpatient Program: Mental Health Expansion, MN Teen Challenge
- Peers Reaching Out, Central Lakes College Foundation
- Prescription Medication Program, Salvation Army
- Transportation Program, Breath of Life Adult Day
- Service Sponsorship Program, Breath of Life Adult Day Service
- Rider Scholarship, Mounted Eagles

- Transportation, Faith In Action Cass County
- Family Home Visiting, Pine River-Backus
- Family Home Visiting, Northland Area Family Center-Remer
- Family Home Visiting, Pillager Family Council
- Make Crow Wing County Smile, Essentia Health and area dentists

### IN-HOUSE AND COLLABORATIVE PROGRAMS

#### IMAGINATION LIBRARY

United Way of Crow Wing and Southern Cass Counties first adopted Imagination Library in 2005. This year there were 1,992 children enrolled locally with a total of 25,607 books having been delivered.

#### GET CONNECTED

United Way launched this online volunteer engagement/management tool to help connect our community members with volunteer needs at over 35 non-profit agencies throughout Crow Wing and Southern Cass counties.

#### OPERATION SANDWICH (Fiscal Agent)

In an effort to meet youth hunger needs during spring and winter breaks and summer months, Operation Sandwich packs and provides free meals to students. 1,191 volunteers donated 2,182 hours of time to serve 8,967 summer lunches throughout the area. In addition, to provide 753 meal packs during the holiday and spring breaks, 40 volunteers donated 59 hours of volunteer time.

#### THE BOOK WAGON

This program follows Operation Sandwich to local elementary schools, distributing new and gently used, age appropriate, books to children picking up lunches. Over 473 books were distributed in the summer. During the spring break and holiday packs, 2,100 books were donated.

#### REACH OUT AND READ

This program introduces and reinforces the value of reading to both parents and children by trusted authority; their primary care physician. Any child ages 6 months to 5 years receives a book at each well-child visit. This year our partners at Essentia Health Clinics distributed over 3,180 books to children.

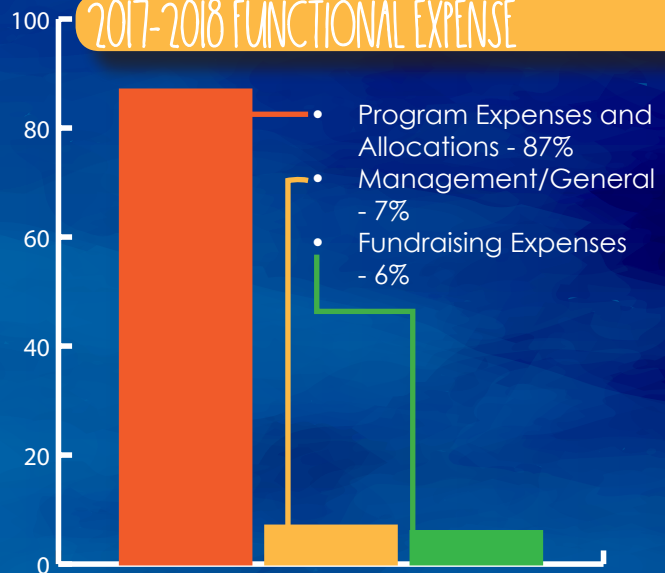
## 2017-2018 NET ASSETS

Net Assets	Unrestricted	Temp. Restricted	Total
Beginning of Year	129,601	215,438	345,039
End of Year	261,225	29,140	290,395

## VOLUNTEER HOURS

- **Imagination Library: 60**
- **Operation Sandwich: 2,241**
- **Board: 435**
- **Business Blitz: 44**
- **Poverty Simulation: 103.5**
- **Chili Cook Off: 82**
- **Llama Llama Read o' Rama: 26**
- **Campaign Coordinator: 150**
- **Thank You Notes: 36.5**

## 2017-2018 FUNCTIONAL EXPENSE



## UNITED WAY BOARD MEMBERS 2017-2018

**Chad Wotreng** – CliftonLarsonAllen LLP

**Cori Reynolds** – Brainerd School District

**Daryl Doucette** – Mid Minnesota Federal Credit Union

**Hara Charlier** – Central Lakes Community College

**Kara Griffin** – Crow Wing County Social Services

**Katie Watland** – Baymont Hotel

**Kevin Thesing** – Lakes Printing

**Matt Kilian** – Brainerd Lakes Chamber of Commerce

**Michelle Francis** – Raboin&Francis Law Firm

**Quinn Swanson** – Happy Dancing Turtle

**Sarah Carlson** – Essentia Health

**Steve Gilbert** – CTC, Consolidated Telephone Co.

**Todd Bymark** – Cuyuna Regional Medical Center

EXECUTIVE DIRECTOR  
KIM ROLLINS



# 2017 CAMPAIGN INVESTORS

## **PILLAR INVESTORS (\$10,000 INVESTORS)**

Essentia Health  
Brainerd School District 181  
Crow Wing County  
CTC, Consolidated Telephone Co.

Cynthia Buxton  
Erik Flowers  
John & Mary Foss  
Jon Gale  
Robert Hershey  
Paul & Sally Jacobson

## **CORNERSTONE AWARDS (\$5,000-\$9,999)**

Graphic Packaging  
BNSF Burlington Northern & Santa Fe  
Widseth, Smith & Nolting  
CliftonLarsonAllen  
Costco

## **2017 COMMUNITY INVESTORS (\$500-\$999)**

Catherine Rassatt  
Paul Means  
Mark Mitzel  
Nathalja Hendrickson  
Quinn Swanson  
Chad Thorson  
Joseph Laber  
Ross & Tammy Bengtson  
Russell Hale  
Amy Headlee  
Darren Larson  
Kevin Donnay  
Mark Hallan  
Matt & Jeanne Kilian  
Kristi Westbrook  
Sheryl Moe  
Chris Rocca  
Steve Smolke  
Duane & Janice Welch  
Mark Roach  
Stacy Cashman  
Barbara Goochey  
Christopher Hoen  
Joseph Hunt  
Larry McKnight  
Tom Norman  
Rodney Ogard  
Adam Rees  
Mark Skogen  
Lisa Slepica  
Hara Charlier  
Steve Erickson  
Tina O'Herron  
William Sanford  
James & Mary Ellen Stolle

## **COMMUNITY PARTNERS**

Bethlehem Lutheran Church  
Brainerd Dispatch  
First Lutheran Church  
Hubbard Radio  
Lakes Printing  
Westgate Mall

## **2017 CAMPAIGN INVESTORS LEADERSHIP GIVERS (\$1,000+)**

Peter Henry  
Robin Torgerson  
Blaine Brecht  
Wayne Holtmeier  
Christine Anderson  
Kevin Larson  
Timothy Houle  
Mona Milloch  
Thomas & Connie Peterson  
Corey Anderson  
Michael Larson  
David Pilot  
Alicia Prahm  
Bruce Kraemer  
David Lambert  
Steven Berg  
Brian Goerges  
Robert McLean  
Brian Ross